

EXPERIENCE

THE HAIRCOLOR BREAKTHROUGH

CHROMATICS

PRISMATIC PERMANENT COLOR. ZERO AMMONIA.

ODS²+ PROTEIN
EXTRACT
TECHNOLOGY

Only Redken, the leader in salon haircolor in the U.S., could take your color results to this dimension. Chromatics uses breakthrough **ODS² + Protein Extract Technology** to deliver multi-dimensional 4D color deep into every hair strand for stunning, high-shine color.

- 2X FORTIFIED HAIR*
- ZERO AMMONIA, ZERO ODOR
- UP TO 100% GRAY COVERAGE
- MULTI-DIMENSIONAL, 4D COLOR RESULTS

All of these benefits and more with...

- **Chromatics Beyond Cover for 100% gray coverage with 2X smoother** results**



FORMULATION GUIDELINES

1. Determine your client's natural hair color level. Remember to consider percentage of gray, hair texture, condition, and hair density
2. Determine the target color (final level and tone) desired by your client
3. Determine the undertone found at the target level (see Level System Chart)
4. Select the Chromatics shade and volume of **Chromatics Oil in Cream Developer** needed to achieve the target color

NOTE: Only use **Chromatics Oil in Cream Developer** with **Chromatics** and **Chromatics Beyond Cover Haircolor**.

FORMULATION AND TIPS

FOR A MORE TRADITIONAL COVERAGE RESULT:

1. For clients with less than 50% gray who want additional coverage, consider adding a small amount of N or NW (.03). For example on 30% gray: mix 1 ½ 7Ab (7.1) + ½ 7N (7)
2. For clients with 50% gray or more, mix equal parts of N or NW (.03) into desired shade. For example on 50% gray: mix ½ 7Ab (7.1) + ½ 7N (7)
3. Mix N or NW (.03) 1 level darker than your desired level.
4. Extend processing time by 5 to 10 minutes (total processing time 40 to 45 minutes).

HAIRCOLOR APPLICATION BEST PRACTICES

1. Pre-treat the hair with Redken **PreArt** and **Hair Cleansing Cream**. Follow with **Extreme CAT** or **Redken Chemistry** as needed. Dry hair.
 2. Apply color generously to Zone 1 (the scalp area) using fine ¼" diagonal partings.
 3. Use the opposite diagonal to cross-check your application to ensure proper application.
 4. Use a timer to ensure accurate timing. Do not over or under process.
- Log-on to **Redken Education On Demand** for an easy step-by-step video!

*Fortifies the cuticle for 2 times less breakage when using the Chromatics Extra Lift haircolor with Chromatics Extra Lift Oil in Cream Developer and Redken Hair Cleansing Cream Shampoo vs. our traditional non-ODS high-lift haircolor.

**Leaves hair 2X smoother than before coloring

CHROMATICS

PRISMATIC PERMANENT COLOR. ZERO AMMONIA.

BEYOND COVER

CHROMATICS

AGE-DEFYING PERMANENT COLOR

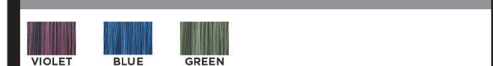
	NATURAL		ADJUSTING COOLS			COOL BROWNS & BEIGES				REDS & VIOLETS				COPPERS				GOLDS				WARM BROWNS & BEIGES				NATURAL WARM	
DESCRIPTION & LEVEL	NATURAL	ASH/ash	ASH/blue	ASH/violet	ASH/green	ASH/gold	IRIDESCENT/gold	VIOLET/brown	BROWN/red	VIOLET/violet	VIOLET/red	RED/violet	RED/red	RED	COPPER	COPPER/copper	COPPER/gold	COPPER/red	GOLD	GOLD/copper	GOLD/red	GOLD/beige	GOLD/iridescent	GOLD/mocha	BROWN/copper	MOCHA	NATURAL WARM
10 ULTRA PALE BLONDE	10N			10Av															10G		10Gr	10Gb				10NW	
9 VERY LIGHT BLONDE	9N	9Ab				9Ag									9C				9G	9Gc			9Gi			9NW	
8 LIGHT BLONDE	8N	8Aa		8Av	8Ag											8Cc	8Cg		8G		8Gr	8Gb				8NW	
7 MEDIUM BLONDE	7N	7Ab				7Ag									7C			7Cr	7G		7Gr	7Gb				7NW	
6 DARK BLONDE	6N	6Aa			6Ag											6Cc	6Cg		6G		6Gr	6Gb		6Gm	6Bc	6M	6NW
5 LIGHT BROWN	5N	5Ab				5Ag	5Ig	5Vb	5Br	5Vv							5C									5NW	
4 MEDIUM BROWN	4N				4Ag						4Vr	4Rv	4Rr	4R					4G							4NW	
3 DARK BROWN	3N							3Vb	3Br	3Vv																3NW	
2 DARKEST BROWN	2N																									2NW	
1 BLACK	1Ab																									1NW	

	COOL BROWNS & BEIGES			COPPERS		WARM BROWNS & BEIGES			NATURAL WARM
DESCRIPTION & LEVEL	ASH/gold	IRIDESCENT/gold	BROWN/violet	BROWN/red	COPPER/red	GOLD/beige	GOLD/iridescent	BROWN/copper	NATURAL WARM
10	10Ag								10NW
9								9Gb	9NW
8	8Ag							8Gi	8NW
7								7Gi	7NW
6								6Gi	6NW
5								5Gi	5NW
4								4Gi	4NW
3									3NW
2									2NW

REMIXED

CHROMATICS

COLOR CONTROL SERIES. ZERO AMMONIA.



CLEAR CHROMATICS CLEAR
Clear is the colorless version of Chromatics. It may be used alone to lift without deposit or to dilute or customize a shade.

Ⓢ Shade contains Rubilane® copper dye Ⓡ Shade contains RS red dye Ⓢ Shade contains Carmin® R red dye

*Mix with any Chromatics shade in a 1:7 ratio for best results.

MIXING & PROCESSING

	MIXING RATIO (COLOR : DEVELOPER)	OIL IN CREAM DEVELOPER	LEVELS OF LIFT	USAGE	MINUTES	SPECIAL INSTRUCTIONS
Chromatics Ultra Rich	Mix 1:1	10 volume	Up to 1	Minimal Lift	35	For traditional, monochromatic gray coverage, formulate with NN or G families
		20 volume	Up to 2	Standard Lift/Gray Coverage		
		30 volume	Up to 3	Additional Lift		
Chromatics	Mix 1:1	10 volume	Up to 1	Minimal Lift	35	For modern, prismatic gray coverage, formulate with the N or NW families
		20 volume	Up to 2	Standard Lift/Gray Coverage		
		30 volume	Up to 3	Additional Lift		
Chromatics Beyond Cover	Mix 1:1	20 volume	Up to 2	75-100% Gray Coverage	35	For best results, use 20 vol. Chromatics Oil in Cream Developer (No heat)
Chromatics Remixed	Mix 1:1*	10 volume	Varies according to formulation	Tonal modifier for on/off scalp	35	Use this ratio to help maintain the proper balance of Chromatics Remixed and Chromatics dyes: ¼ Chromatics Remixed and ¾ Chromatics. Color tone and longevity may be compromised otherwise.
		20 volume				
		30 volume				

Chromatics is mixed in a 1:1 ratio of color cream to Chromatics Oil in Cream Developer. Example 2 oz. 5N (5) Chromatics + 2 oz. 20 vol. Chromatics Oil in Cream Developer.

UNDERSTANDING THE LABEL

- 0 NATURAL
- 1 BLUE/ASH
- 2 VIOLET
- 3 GOLD
- 4 COPPER
- 5 MAHOGANY/RED VIOLET
- 6 RED
- 7 GREEN
- 8 MOCHA
- 9 PEARL